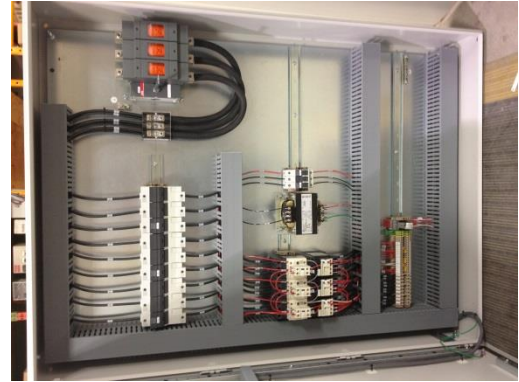


Press Release

On any given day at Robertson Bright's Mississauga branch location, RBI have Local 353 members actively engaged in the RBI Control Panel Shop as a contract manufacturer of control panels serving a wide variety of needs, industries and marketplaces.



The panel shop began many years ago at McDowell Electric Inc., another long established 353 contractor who was acquired by RBI in December 2008. Since that time, the panel shop has been relocated to expanded facilities at RBI where the operation continues to grow despite aggressive non-union competition.

Under the direction of Local 353 member Rolf Banninger, (RBI's Automation & Controls Team Leader) the control panels produced might be part of a large production run numbering in the hundreds, or it could be a single *one-off* fabrication as part of a custom production line or system. Their products are utilized as part of automated production lines, large water features, water treatment, theatrical rigging systems, environment controls, pre-fabricated wiring systems and remote cellular based wireless alarms....and the list goes on. Many systems have been shipped for use in the USA, Mexico and overseas.

All control panels produced in their facility have a CAD schematic (and operation manual when appropriate) included to facilitate timely installation and troubleshooting. A rigorous and documented Quality Control Program helps to verify that each control panel shipped from the facility has been pre-tested to ensure that the required functionality and reliability mandate will be met from day one. The same mindset is given to safety considerations that are inherent in the design of every control panel, always respecting the requirements of the local governing electrical safety authorities where the equipment will be utilized.

Their services may also include complete integration and on site commissioning services as part of the contract with their customers; be it an end user, engineering firm, specialty services company or on behalf of another electrical contractor. As such, they welcome your inquiries whether you have a specific control panel already designed or you need a complete design and fabrication services package.

In the spirit of promoting IBEW built products among all of our member contractors, we recommend contact be made to Rolf at rolfb@rbigroup.net or 905-813-3005 ex 210 to see how RBI may be able to assist your needs.

Let's keep our brothers and sisters actively employed in this expanding world market opportunity!